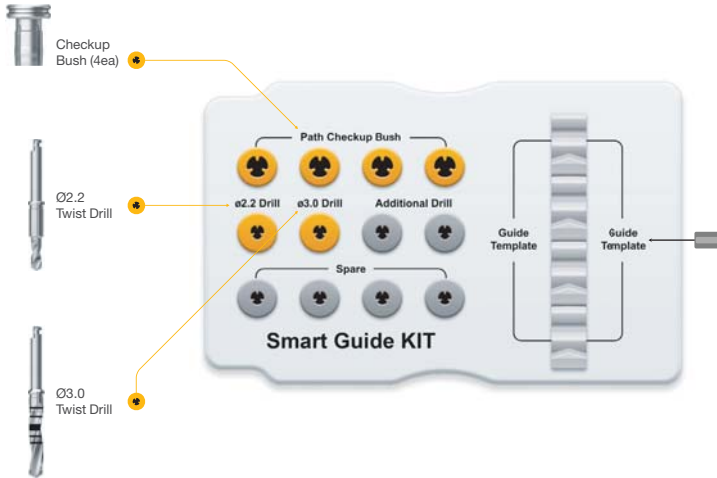


SmartGuide KIT

Thermoplastic Surgical Template

OSSTEM[®]
IMPLANT

SmartGuide KIT Code: OSGK



Round Bur

- Guide marking on working model
- Recommended usage : 10 times

D $\overline{\hspace{1.5cm}}$ Ø1.8
RAHM1018



Round bur

Ø2.2 Twist Drill for working model

- Drill for working model
- Recommended usage : 10 times

D $\overline{\hspace{1.5cm}}$ Ø2.2
2D2208LC01



Twist drill

Composition of Lower Valve



Guide Pin (4ea)



Round bur



Ø2.2 Drill

Guide Pin

- To fix Smart template on the working model
- Connected with the sleeve of Smart template



SGP22

Checkup Bush

- To check the template with CT or X-ray
- Connected to Smart template



SGCB30S

Twist Drill

- Drill used with template
- Stable drilling with the sleeve of Smart template

D $\overline{\hspace{1.5cm}}$ Ø2.2 $\overline{\hspace{1.5cm}}$ Ø3.0
SGTD2207S QGTD3008



Ø2.2 Drill



Ø3.0 Drill

Smart Template making

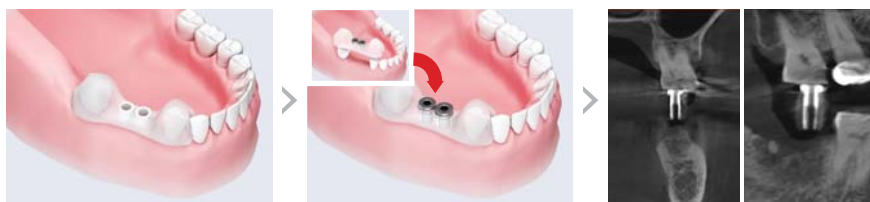


Thermoplastic

01

To guide the target place through accurate Surgical Template

Smart Template usage



3D Pre-formed Design

02

To shorten making time
3D Pre-formed Design



Stable drilling with
enough sleeve

03

To enable stable drilling with
optimized sleeve length

OSSTEM[®]
IMPLANT

Ab November 2016
unter www.bedent.ch
erhältlich.