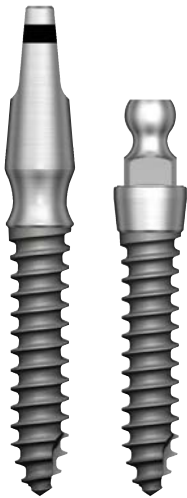


MS SA $\varnothing 2.0$ Implant

Optimized for Narrow Anterior Case

OSSTEM[®]
IMPLANT

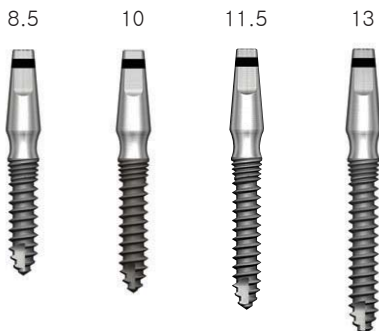
MS SA $\varnothing 2.0$



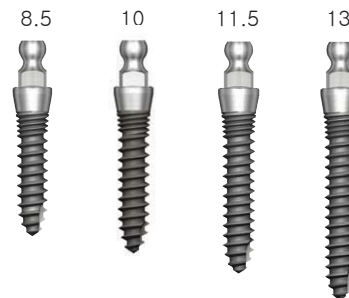
Narrow Ridge	Dia.	$\varnothing 2.0$	
	G/H	2.5	4.0
Length	8.5	MSN2008S25	MSN2008S40
	10	MSN2010S25	MSN2010S40
	11.5	MSN2011S25	MSN2011S40
	13	MSN2013S25	MSN2013S40

Denture	Dia.	$\varnothing 2.0$	
	G/H	2.0	4.0
Length	8.5	MSD2008S20	MSD2008S40
	10	MSD2010S20	MSD2010S40
	11.5	MSD2011S20	MSD2011S40
	13	MSD2013S20	MSD2013S40

MS Implant (Narrow ridge) $\varnothing 2.0$



MS Implant (Denture) $\varnothing 2.0$



Indication



Optimized Implant for the maxillary anterior part



Lab Analog
Code : MSPLA



Impression Cap
Code : MSPIC



Temporary Cap
Code : MSPTC



Denture Type Implant for the edentulous patient

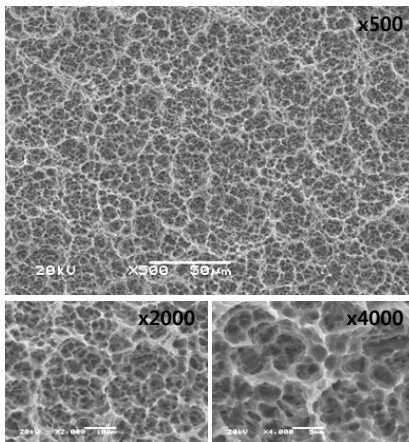


Lab Analog
Code : MSDLA



O-Ring Retainer
Cap Set
Code : OARCS

Surface of MS Implant $\varnothing 2.0$



Grade	
Pure Ti	Gr1
	Gr2
	Gr3
	Gr4
Ti alloy Ti-6AL -4V ELI	

Bio-compatibility

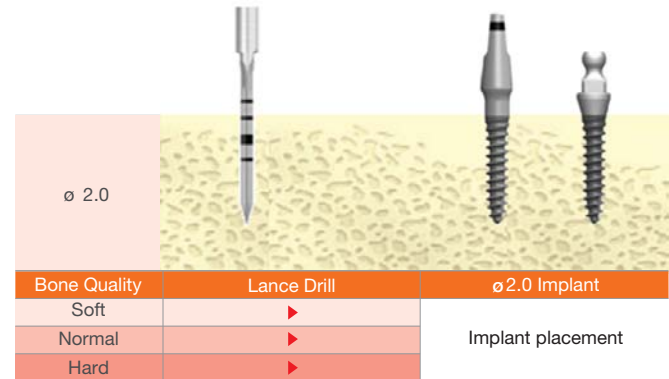
Strength



Surgical Guide for $\varnothing 2.0$

MS SA $\varnothing 2.0$ Drilling Sequence

-Lower than 30Ncm recommended



OSSTEM[®]
IMPLANT

Ab November 2016
unter www.bedent.ch
erhältlich.